

Middle School All-County Audition 2022

Piccolo

Students auditioning on Piccolo must also audition on flute.

Upon entering the room, the student will hand both flute & pic audition cards to the proctor.

Students will perform the entire flute audition, then receive 60 seconds to warm-up on piccolo in the audition room. The student will only perform the etude on piccolo, no scales.

MS All-County Etude 2022

2 3 4 5

p *mf* *p*

6 *rit.* 7 *a tempo* 8

pp *mp* *mf* *mp* *mf* *mp*

9 10

ff 3

Notes- 5 Points Rhythm- 5 Points Articulation- 5 Points Dynamics- 5 Points Phrasing/Tempo- 5 Points

Audition registration is due to your band director by **October 28th**
Auditions will be the evening of Monday, **November 14th** at Strawberry Crest HS
Results will be posted to the county on **December 1st**

If you are earn a position in one of the bands, rehearsals will be:

Tuesday, **January 17th** 6:00 PM-9:00 PM @ East Bay HS

Thursday, **January 19th** 6:00 PM-9:00 PM @ East Bay HS

Friday, **January 20th** 9:00 AM-4:30 PM @ East Bay HS (School Business)

Concert: Saturday, **January 21st** 9:30 AM @ East Bay High School

Middle School All-County Audition 2022

Flute

1. Upon entering the room, the student will give their audition card to the proctor and receive 60 seconds to warm-up prior to the audition.
2. The student will perform the chromatic scale
3. The student will be told which two of the three major scales will be performed.
4. The student will perform the All-County Etude

Chromatic Scale: Written = 5 points All-State Requirement = 15 points (C to C 3-Octaves, 10 points for two octaves)



Concert F Major Scale: 1 Octave = 5 points 2 Octaves = 10 points



Concert Ab Major Scale: 1 Octave = 5 points 2 Octaves = 10 points



Concert Bb Major Scale: 1 Octave = 5 points 2 Octaves = 10 points



MS All-County Etude 2022

Notes- 5 Points Rhythm- 5 Points Articulation- 5 Points Dynamics- 5 Points Phrasing/Tempo- 5 Points

Audition registration is due to your band director by **October 28th**
Auditions will be the evening of Monday, **November 14th** at Strawberry Crest HS
Results will be posted to the county on **December 1st**

If you are earn a position in one of the bands, rehearsals will be:
Tuesday, **January 17th** 6:00 PM-9:00 PM @ East Bay HS
Thursday, **January 19th** 6:00 PM-9:00 PM @ East Bay HS
Friday, **January 20th** 9:00 AM-4:30 PM @ East Bay HS (School Business)
Concert: Saturday, **January 21st** 9:30 AM @ East Bay High School

Middle School All-County Audition 2022

Oboe

1. Upon entering the room, the student will give their audition card to the proctor and receive 60 seconds to warm-up prior to the audition.
2. The student will perform the chromatic scale
3. The student will be told which two of the three major scales will be performed.
4. The student will perform the All-County Etude

Chromatic Scale: Written = 5 points All-State Requirement = 10 points (two octaves from C)



Concert F Major Scale: 1 Octave = 5 points 2 Octaves = 10 points



Concert Ab Major Scale: 1 Octave = 5 points 2 Octaves = 10 points



Concert Bb Major Scale: 1 Octave = 5 points 2 Octaves = 10 points



MS All-County Etude 2022

2 3 4 5

p *mf* *p*

6 *rit.* 7 *a tempo* 8

pp *mp* *mf* *mp* *mf* *mp*

9 10

ff 3

Notes- 5 Points Rhythm- 5 Points Articulation- 5 Points Dynamics- 5 Points Phrasing/Tempo- 5 Points

Audition registration is due to your band director by **October 28th**
Auditions will be the evening of Monday, **November 14th** at Strawberry Crest HS
Results will be posted to the county on **December 1st**

If you earn a position in one of the bands, rehearsals will be:
Tuesday, **January 17th** 6:00 PM-9:00 PM @ East Bay HS
Thursday, **January 19th** 6:00 PM-9:00 PM @ East Bay HS
Friday, **January 20th** 9:00 AM-4:30 PM @ East Bay HS (School Business)
Concert: Saturday, **January 21st** 9:30 AM @ East Bay High School

Middle School All-County Audition 2022

Clarinet & Bass Clarinet

1. Upon entering the room, the student will give their audition card to the proctor and receive 60 seconds to warm-up prior to the audition.
2. The student will perform the chromatic scale
3. The student will be told which two of the three major scales will be performed.
4. The student will perform the All-County Etude

Chromatic Scale: Written = 5 points All-State Requirement = 15 points (3 Octaves from E, 10 points for 2 octaves)



Concert F Major Scale: 1 Octave = 5 points 2 Octaves = 10 points 3 Octaves = 15 points



Concert Ab Major Scale: 1 Octave = 5 points 2 Octaves = 10 points 3 Octaves = 15 points



Concert Bb Major Scale: 1 Octave = 5 points 2 Octaves = 10 points 3 Octaves = 15 points



MS All-County Etude 2022

Notes- 5 Points Rhythm- 5 Points Articulation- 5 Points Dynamics- 5 Points Phrasing/Tempo- 5 Points

Audition registration is due to your band director by **October 28th**
Auditions will be the evening of Monday, **November 14th** at Strawberry Crest HS
Results will be posted to the county on **December 1st**

If you earn a position in one of the bands, rehearsals will be:
Tuesday, **January 17th** 6:00 PM-9:00 PM @ East Bay HS
Thursday, **January 19th** 6:00 PM-9:00 PM @ East Bay HS
Friday, **January 20th** 9:00 AM-4:30 PM @ East Bay HS (School Business)
Concert: Saturday, **January 21st** 9:30 AM @ East Bay High School

Middle School All-County Audition 2022

Bass Clarinet

1. Upon entering the room, the student will give their audition card to the proctor and receive 60 seconds to warm-up prior to the audition.
2. The student will perform the chromatic scale
3. The student will be told which two of the three major scales will be performed.
4. The student will perform the All-County Etude

Chromatic Scale: Written = 5 points All-State Requirement = 15 points (3 Octaves from E, 10 points for 2 octaves)



Concert F Major Scale: 1 Octave = 5 points 2 Octaves = 10 points 3 Octaves = 15 points



Concert Ab Major Scale: 1 Octave = 5 points 2 Octaves = 10 points 3 Octaves = 15 points



Concert Bb Major Scale: 1 Octave = 5 points 2 Octaves = 10 points 3 Octaves = 15 points



MS All-County Etude 2022

1 *p* 2 *mf* 3 *p* 4 *mf* 5 *mf*

6 *rit.* *pp* 7 *a tempo* *mf* 8 *mf* *mf* *mp*

9 *ff* 10 *ff*

Notes- 5 Points Rhythm- 5 Points Articulation- 5 Points Dynamics- 5 Points Phrasing/Tempo- 5 Points

Audition registration is due to your band director by **October 28th**
Auditions will be the evening of Monday, **November 14th** at Strawberry Crest HS
Results will be posted to the county on **December 1st**

If you earn a position in one of the bands, rehearsals will be:
Tuesday, **January 17th** 6:00 PM-9:00 PM @ East Bay HS
Thursday, **January 19th** 6:00 PM-9:00 PM @ East Bay HS
Friday, **January 20th** 9:00 AM-4:30 PM @ East Bay HS (School Business)
Concert: Saturday, **January 21st** 9:30 AM @ East Bay High School

Middle School All-County Audition 2022

Bassoon, Trombone, Euphonium

1. Upon entering the room, the student will give their audition card to the proctor and receive 60 seconds to warm-up prior to the audition.
2. The student will perform the chromatic scale
3. The student will be told which two of the three major scales will be performed.
4. The student will perform the All-County Etude

Chromatic Scale: Written = 5 points All-State Requirement = 10 points (Two octaves from F)



Concert F Major Scale: 1 Octave = 5 points 2 Octaves = 10 points



Concert Ab Major Scale: 1 Octave = 5 points 2 Octaves = 10 points



Concert Bb Major Scale: 1 Octave = 5 points 2 Octaves = 10 points 3 Octaves = 15 points



MS All-County Etude 2022

Notes- 5 Points Rhythm- 5 Points Articulation- 5 Points Dynamics- 5 Points Phrasing/Tempo- 5 Points

Audition registration is due to your band director by **October 28th**

Auditions will be the evening of Monday, **November 14th** at Strawberry Crest HS

Results will be posted to the county on **December 1st**

If you are earn a position in one of the bands, rehearsals will be:

Tuesday, **January 17th** 6:00 PM-9:00 PM@ East Bay HS

Thursday, **January 19th** 6:00 PM-9:00 PM @ East Bay HS

Friday, **January 20th** 9:00 AM-4:30 PM @ East Bay HS (School Business)

Concert: Saturday, **January 21st** 9:30 AM @ East Bay High School

Middle School All-County Audition 2022

Alto & Bari Sax

1. Upon entering the room, the student will give their audition card to the proctor and receive 60 seconds to warm-up prior to the audition.
2. The student will perform the chromatic scale
3. The student will be told which two of the three major scales will be performed.
4. The student will perform the All-County Etude

Chromatic Scale: Written = 5 points All-State Requirement = 10 points (2 octaves from C)



Concert F Major Scale: 1 Octave = 5 points 2 Octaves = 10 points



Concert Ab Major Scale: 1 Octave = 5 points



Concert Bb Major Scale: 1 Octave = 5 points



Alto Sax

MS All-County Etude 2022

2 3 4 5

p *mf* *p*

6 *rit.* *pp* 7 *a tempo* *mp* *mf* 8 *mp* *mf* *mp*

9 *ff* 10 *>* *v*

Notes- 5 Points Rhythm- 5 Points Articulation- 5 Points Dynamics- 5 Points Phrasing/Tempo- 5 Points

Audition registration is due to your band director by **October 28th**
Auditions will be the evening of Monday, **November 14th** at Strawberry Crest HS
Results will be posted to the county on **December 1st**

If you are earn a position in one of the bands, rehearsals will be:
Tuesday, **January 17th** 6:00 PM-9:00 PM@ East Bay HS
Thursday, **January 19th** 6:00 PM-9:00 PM @ East Bay HS
Friday, **January 20th** 9:00 AM-4:30 PM @ East Bay HS (School Business)
Concert: Saturday, **January 21st** 9:30 AM @ East Bay High School

Middle School All-County Audition 2022

Tenor Sax

1. Upon entering the room, the student will give their audition card to the proctor and receive 60 seconds to warm-up prior to the audition.
2. The student will perform the chromatic scale
3. The student will be told which two of the three major scales will be performed.
4. The student will perform the All-County Etude

Chromatic Scale: Written = 5 points All-State Requirement = 10 points (two octaves from C)



Concert F Major Scale: 1 Octave = 5 points



Concert Ab Major Scale: 1 Octave = 5 points



Concert Bb Major Scale: 1 Octave = 5 points 2 Octaves = 10 points



MS All-County Etude 2022

Notes- 5 Points

Rhythm- 5 Points

Articulation- 5 Points

Dynamics- 5 Points

Phrasing/Tempo- 5 Points

Audition registration is due to your band director by **October 28th**

Auditions will be the evening of Monday, **November 14th** at Strawberry Crest HS

Results will be posted to the county on **December 1st**

If you are earn a position in one of the bands, rehearsals will be:

Tuesday, **January 17th** 6:00 PM-9:00 PM@ East Bay HS

Thursday, **January 19th** 6:00 PM-9:00 PM @ East Bay HS

Friday, **January 20th** 9:00 AM-4:30 PM @ East Bay HS (School Business)

Concert: Saturday, **January 21st** 9:30 AM @ East Bay High School

Middle School All-County Audition 2022

Trumpet

1. Upon entering the room, the student will give their audition card to the proctor and receive 60 seconds to warm-up prior to the audition.
2. The student will perform the chromatic scale
3. The student will be told which two of the three major scales will be performed.
4. The student will perform the All-County Etude

Chromatic Scale: Written = 5 points All-State Requirement = 10 points (Two Octaves from G)



Concert F Major Scale: 1 Octave = 5 points 2 Octaves = 10 points



Concert Ab Major Scale: 1 Octave = 5 points 2 Octaves = 10 points



Concert Bb Major Scale: 1 Octave = 5 points 2 Octaves = 10 points



MS All-County Etude 2022

1 *p* *mf* *p* 2 3 4 5

6 *rit.* *pp* *mp* *mf* *a tempo* 7 8 *mp* *mf* *mp*

9 *ff* 10 3

Notes- 5 Points Rhythm- 5 Points Articulation- 5 Points Dynamics- 5 Points Phrasing/Tempo- 5 Points

Audition registration is due to your band director by **October 28th**
Auditions will be the evening of Monday, **November 14th** at Strawberry Crest HS
Results will be posted to the county on **December 1st**

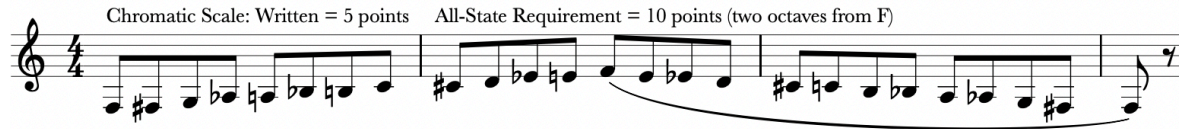
If you are earn a position in one of the bands, rehearsals will be:
Tuesday, **January 17th** 6:00 PM-9:00 PM @ East Bay HS
Thursday, **January 19th** 6:00 PM-9:00 PM @ East Bay HS
Friday, **January 20th** 9:00 AM-4:30 PM @ East Bay HS (School Business)
Concert: Saturday, **January 21st** 9:30 AM @ East Bay High School

Middle School All-County Audition 2022

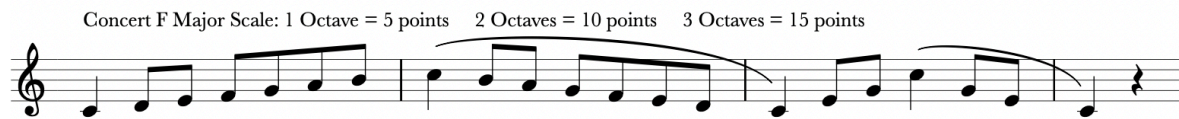
French Horn

1. Upon entering the room, the student will give their audition card to the proctor and receive 60 seconds to warm-up prior to the audition.
2. The student will perform the chromatic scale
3. The student will be told which two of the three major scales will be performed.
4. The student will perform the All-County Etude

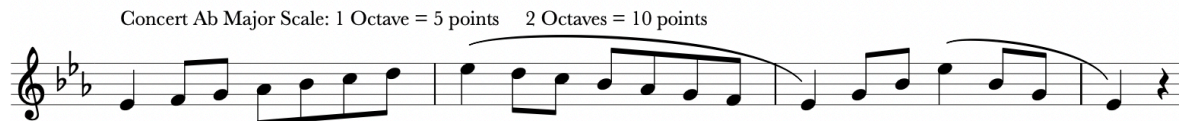
Chromatic Scale: Written = 5 points All-State Requirement = 10 points (two octaves from F)



Concert F Major Scale: 1 Octave = 5 points 2 Octaves = 10 points 3 Octaves = 15 points



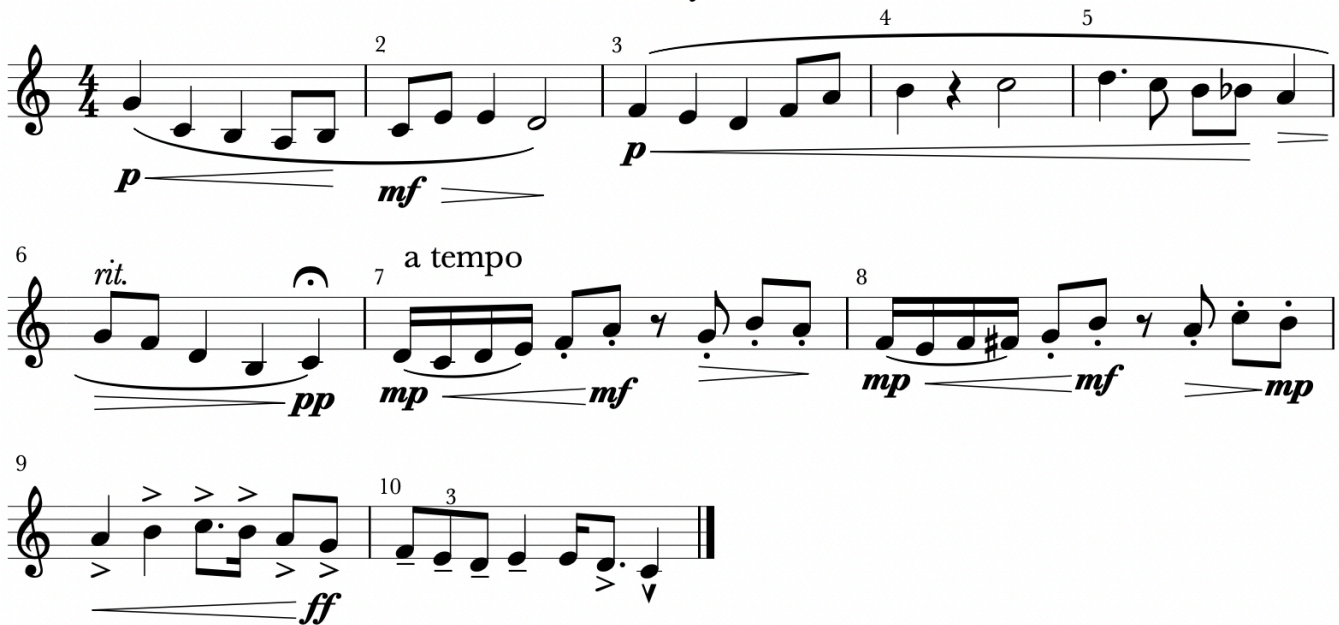
Concert Ab Major Scale: 1 Octave = 5 points 2 Octaves = 10 points



Concert Bb Major Scale: 1 Octave = 5 points 2 Octaves = 10 points



MS All-County Etude 2022



Notes- 5 Points Rhythm- 5 Points Articulation- 5 Points Dynamics- 5 Points Phrasing/Tempo- 5 Points

Audition registration is due to your band director by **October 28th**
Auditions will be the evening of Monday, **November 14th** at Strawberry Crest HS
Results will be posted to the county on **December 1st**

If you earn a position in one of the bands, rehearsals will be:
Tuesday, **January 17th** 6:00 PM-9:00 PM @ East Bay HS
Thursday, **January 19th** 6:00 PM-9:00 PM @ East Bay HS
Friday, **January 20th** 9:00 AM-4:30 PM @ East Bay HS (School Business)
Concert: Saturday, **January 21st** 9:30 AM @ East Bay High School

Middle School All-County Audition 2022

Tuba

1. Upon entering the room, the student will give their audition card to the proctor and receive 60 seconds to warm-up prior to the audition.
2. The student will perform the chromatic scale
3. The student will be told which two of the three major scales will be performed.
4. The student will perform the All-County Etude

Chromatic Scale: Written = 5 points All-State Requirement = 10 points (Two Octaves from F)



Concert F Major Scale: 1 Octave = 5 points 2 Octaves = 10 points



Concert Ab Major Scale: 1 Octave = 5 points 2 Octaves = 10 points



Concert Bb Major Scale: 1 Octave = 5 points 2 Octaves = 10 points



MS All-County Etude 2022

2 3 4 5

p *mf* *p*

6 *rit.* 7 *a tempo* 8

pp *mf* *mp* *mf* *mp*

9 10

ff

Notes- 5 Points

Rhythm- 5 Points

Articulation- 5 Points

Dynamics- 5 Points

Phrasing/Tempo- 5 Points

Audition registration is due to your band director by **October 28th**

Auditions will be the evening of Monday, **November 14th** at Strawberry Crest HS

Results will be posted to the county on **December 1st**

If you earn a position in one of the bands, rehearsals will be:

Tuesday, **January 17th** 6:00 PM-9:00 PM @ East Bay HS

Thursday, **January 19th** 6:00 PM-9:00 PM @ East Bay HS

Friday, **January 20th** 9:00 AM-4:30 PM @ East Bay HS (School Business)

Concert: Saturday, **January 21st** 9:30 AM @ East Bay High School

Middle School All-County Audition 2022

Percussion

1. Upon entering the room, the student will give their audition card to the proctor and receive 60 seconds to warm-up prior to the audition.
2. The student will perform the chromatic scale
3. The student will be told which two of the three major scales will be performed.
4. The student will perform the Mallet All-County Etude
5. The student will perform the Snare All-County Etude

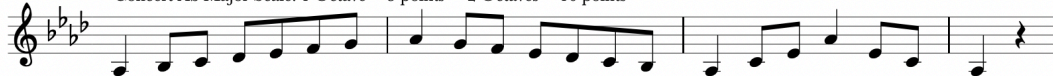
Chromatic Scale: Written = 5 points All-State Requirement = 10 points (Two Octaves from Bb)



Concert F Major Scale: 1 Octave = 5 points 2 Octaves = 10 points



Concert Ab Major Scale: 1 Octave = 5 points 2 Octaves = 10 points



Concert Bb Major Scale: 1 Octave = 5 points 2 Octaves = 10 points



MS All-County Etude 2022

Mallet

Musical notation for the Mallet Etude in 4/4 time. It consists of three staves of music. The first staff contains measures 1-5 with dynamics *p*, *mf*, and *p*. The second staff contains measures 6-8 with dynamics *pp*, *mp*, *mf*, *mp*, *mf*, and *mp*. The third staff contains measures 9-10 with dynamics *ff*. Performance markings include *rit.*, *a tempo*, and accents.

Notes- 5 Points Rhythm- 5 Points
Dynamics- 5 Points Phrasing/Tempo- 5 Points

Snare

Musical notation for the Snare Etude in 4/4 time. It consists of three staves of music. The first staff contains measures 1-5 with dynamics *p*, *mf*, *p*, and *f*. The second staff contains measures 6-8 with dynamics *pp*, *mp*, *mf*, *mp*, and *mf*. The third staff contains measures 9-10 with dynamics *mf*. Performance markings include *rit.*, *a tempo*, and accents.

Rhythm- 5 Points Dynamics- 5 Points
Technique= 5 Points Phrasing/Tempo: 5 Points

Audition registration is due to your band director by **October 28th**
Auditions will be the evening of Monday, **November 14th** at Strawberry Crest HS
Results will be posted to the county on **December 1st**

If you are earn a position in one of the bands, rehearsals will be:
Tuesday, **January 17th** 6:00 PM-9:00 PM @ East Bay HS
Thursday, **January 19th** 6:00 PM-9:00 PM @ East Bay HS
Friday, **January 20th** 9:00 AM-4:30 PM @ East Bay HS (School Business)
Concert: Saturday, **January 21st** 9:30 AM @ East Bay High School